

Test Report

No.: CANEC25028118117

Date: Nov 18, 2025

Page 1 of 9

Signed for and on behalf of

Test Report

No.: CANEC25028118117

Date: Nov 18, 2025

Page 2 of 9

Test Result(s):

Test Part Description

SN ID	Sample No.	SGS Sample ID	Description
SN1	A7	CAN25-0281181-0001.C007	Black plastic with chip
SN2	A8	CAN25-0281181-0001.C008	Copper-colored metal with silvery surface & chip
SN3	A9	CAN25-0281181-0001.C009	Silvery metal pin

Remarks:

- (1) 1 mg/kg = 1 ppm = 0.0001%
- (2) MDL = Method Detection Limit
- (3) ND = Not Detected (< MDL)
- (4) "-" = Not Regulated

EU RoHS Directive (EU) 2015/863 amending Annex II to Directive 2011/65/EU - Lead, Mercury, Cadmium, Hexavalent chromium, Polybrominated biphenyls (PBB), Polybrominated diphenyl ethers (PBDE), Bis(2-ethylhexyl) phthalate (DEHP), Butyl benzyl phthalate (BBP), Dibutyl phthalate (DBP) and Diisobutyl phthalate (DIBP)



Test Report

No.: CANEC25028118117

Date: Nov 18, 2025

Page 3 of 9



Test Report

No.: CANEC25028118117

Date: Nov 18, 2025

Page 4 of 9

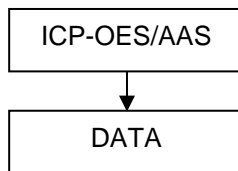
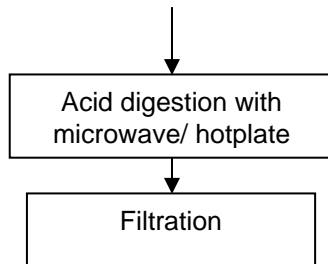
Remark: Results & photo(s) of this report refer to test report CANEC25028118116.

Unless otherwise stated, the decision rule for conformity reporting is based on Binary Statement for Simple Acceptance Rule ($w=0$) stated in ILAC-G8:09/2019.

ATTACHMENTS

Elements Testing Flow Chart

These samples were dissolved totally by pre-conditioning method according to below flow chart.

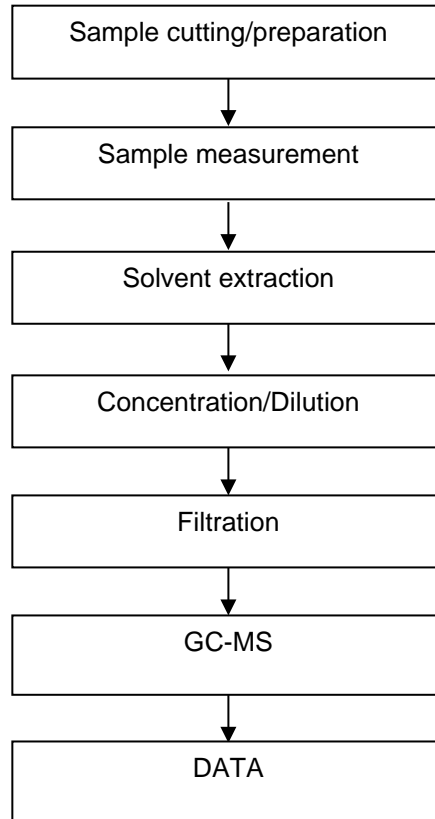


Hexavalent Chromium (Cr(VI)) Testing Flow Chart

Metallic
material



PBB(s)/PBDE(s)/Phthalates Testing Flow Chart

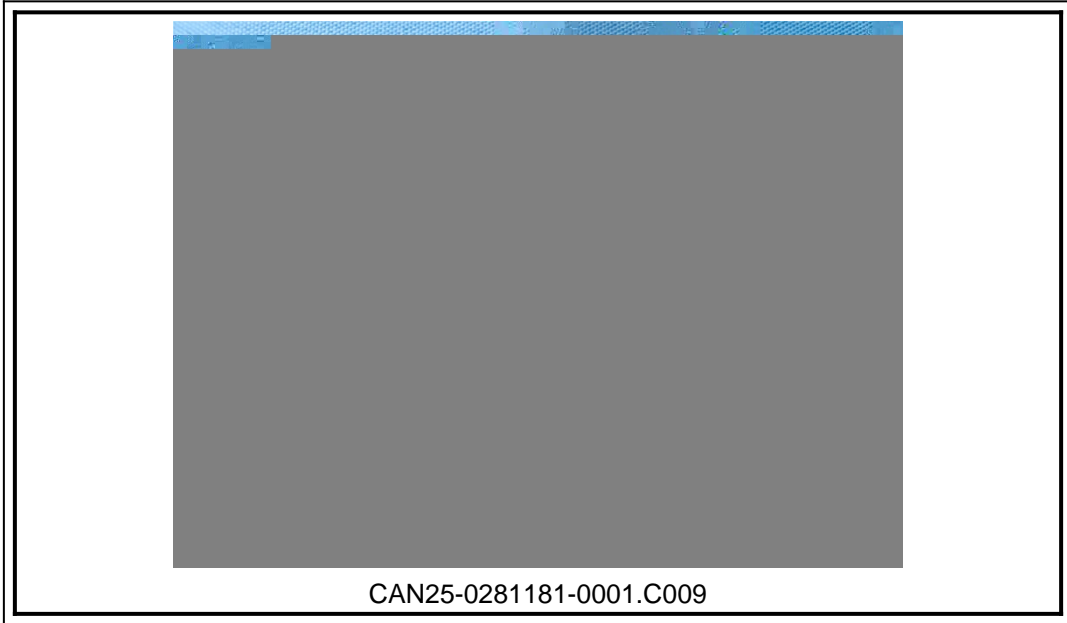


Test Report

No.: CANEC25028118117

Date: Nov 18, 2025

Page 9 of 9



SGS authenticate the photo on original report only
*** End of Report ***